

32/13

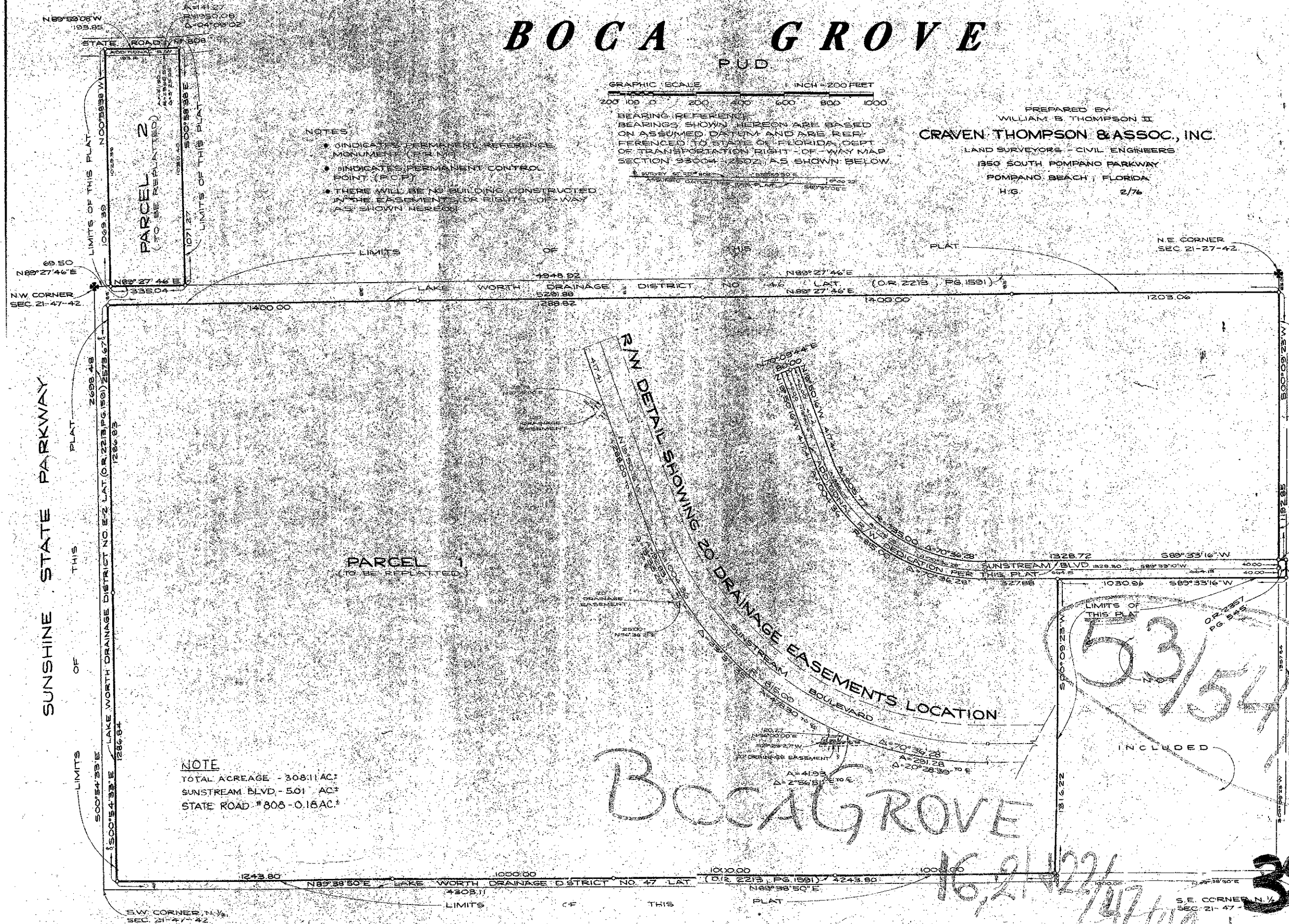
BOCA GROVE PUD



PREPARED BY
WILLIAM B. THOMPSON II
Craven Thompson & Assoc., Inc.
LAND SURVEYORS - CIVIL ENGINEERS
1350 SOUTH POMPANO PARKWAY
POMPANO BEACH, FLORIDA
H/6 2/76

- NOTES
- INDICATES PERMANENT REFERENCE MONUMENT (P.R.M.)
 - INDICATES PERMANENT CONTROL POINT (P.C.P.)
 - THERE WILL BE NO BUILDING CONSTRUCTED IN THE EASEMENTS OR RIGHTS OF WAY AS SHOWN HEREON

BEARING REFERENCE BEARINGS SHOWN HEREON ARE BASED ON ASSUMED DATUM AND ARE REFERENCED TO STATE OF FLORIDA DEPT. OF TRANSPORTATION RIGHT-OF-WAY MAP SECTION 93004-12502, AS SHOWN BELOW.



NOTE
TOTAL ACREAGE - 308.11 AC.
SUNSTREAM BLVD. - 501 AC.
STATE ROAD #808 - 0.16 AC.

BOCAGROVE

53
154
39
INCLUDED

16,21,22, 147, 42
32/13



ADRENAGE

BOCA DEL MAR NO 5 (10/127)